

Schedule 1

Item 1 Description of Agreement Area

A. External boundary description

The agreement area covers all the land and waters within that part of Lot 4 on CP880081 (Wiralla Pastoral Holding) located within the Native Title Determination Application QUD80/2009 Kullilli People (QC2009/001), further described as that part of that lot west of the line described by the following coordinate points:

Longitude° (East)	Latitude° (South)
144.230261	27.807244
144.234367	27.801219
144.238280	27.795481
144.242965	27.789455
144.247588	27.784002
144.253889	27.779001
144.259740	27.774745
144.265721	27.771176
144.270677	27.768927
144.279494	27.764834
144.285154	27.761209
144.291070	27.756839
144.294986	27.751674
144.299097	27.747366
144.303463	27.742314
144.306285	27.738469
144.308913	27.733823
144.311410	27.729063
144.313327	27.724019
144.315170	27.715940
144.315859	27.709926
144.316286	27.702425
144.316390	27.694982
144.317077	27.687880
144.317073	27.686700
144.386509	27.599205

Note

Data Reference and source

- Agreement boundary data compiled by National Native Title Tribunal based on data sourced from Department of Natural Resources and Mines Qld (August 2013).
- Cadastre data sourced from Department of Natural Resources and Mines Qld (August 2013).

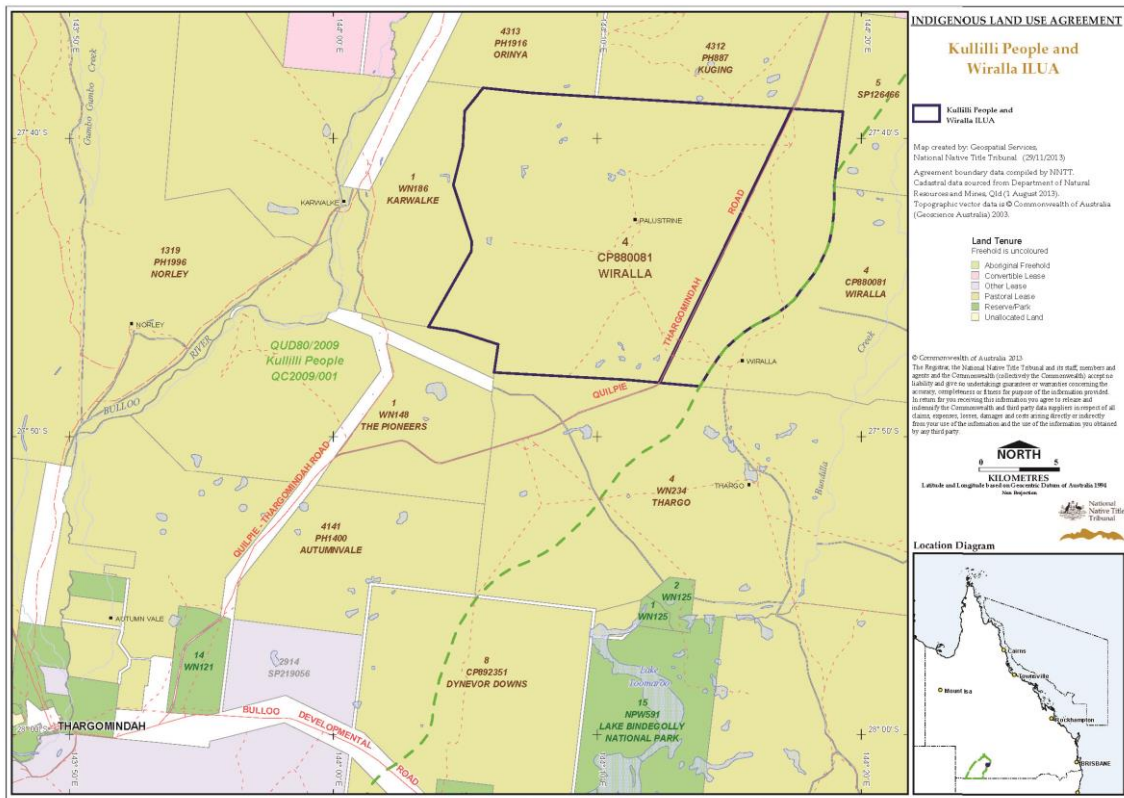
Reference datum

Geographical coordinates have been provided by the NNTT Geospatial Services and are referenced to the Geocentric Datum of Australia 1994 (GDA94), in decimal degrees and are based on the spatial reference data acquired from the various custodians at the time.

Use of Coordinates

Where coordinates are used within the description to represent cadastral or topographical boundaries or the intersection with such, they are intended as a guide only. As an outcome to the custodians of cadastral and topographic data continuously recalculating the geographic position of their data based on improved survey and data maintenance procedures, it is not possible to accurately define such a position other than by detailed ground survey.

B. Map



Item 2 Description of Lease

Item 1 Pastoral Holding 15/5573 comprising Lot 4 on CP880081

Item 3 Description of Lessee

Louise Ann Battye and Richard John Harries